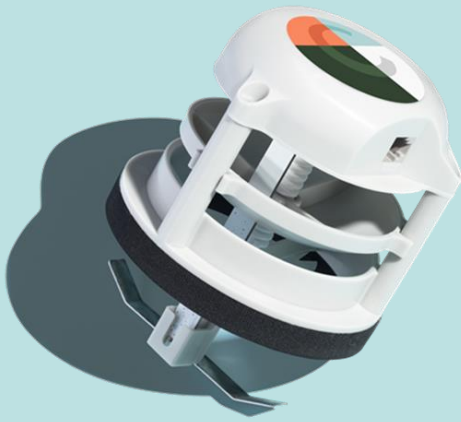


AirGate



Application

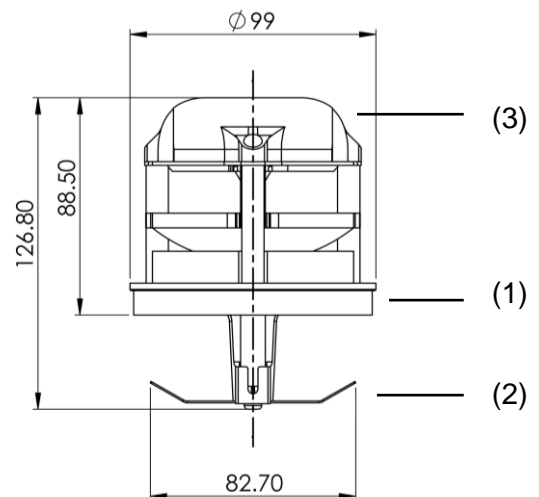
AirGate is a control valve and measures temperature, humidity, air quality and air volume per room. The valve disc regulates the air flow as required based on humidity and air quality.

AirGates are installed directly in the air distribution boxes.

The AirGate is used in combination with a FlatMaster (supply and control) and has two RJ12 connections. Up to 24 AirGates can be connected in series.

Technical data

Measured variable	Range
Temperature	0 - 40°C
Humidity	0 - 100% rH
Air quality (VOC)	0 - 1000 ppm
Volume flow	0 - 60 m ³ /h
Power supply	SAG bus
Communication	SAG bus



Installation

The AirGate is pushed into the air duct in the air distribution box until the sealing lip (1) seals the access. The anchor (2) then hooks into the ribs of the air duct (internal diameter 78 - 82 mm).

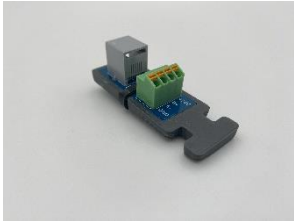
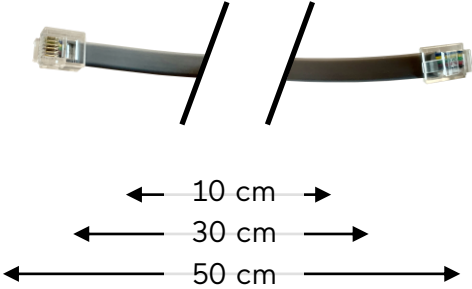
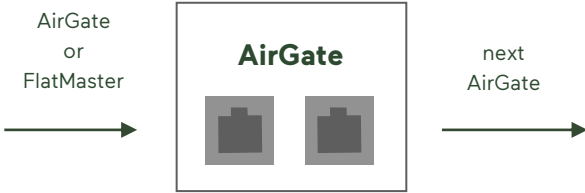
The bus cable (3) is then clicked into the AirGate. Up to 24 devices can be connected in series.

Connection

The AirGates and the FlatMaster are connected in series with each other and a FlatMaster via the bus cable. Power is supplied via the bus cable.

A 30 cm pre-assembled cable (RJ12) is supplied for this purpose. Cable variants in the following lengths are available for different installations: 10, 30 and 50 cm.

For distances of 2 m or more, SAGB terminal adapters and a bus cable type J-Y(ST)Y 2 x 2 x 0.8 mm must be used. The last AirGate in each case is fitted with a terminating resistor.



SAGB clamp adapter